

Nonprofit Org.  
U.S. Postage  
PAID  
Columbus,  
OH  
Permit No.  
711

ADDRESS SERVICE REQUESTED

Office of  
**CONTINUING  
EDUCATION**

**224 Mount Hall  
1050 Carmack Road  
Columbus, OH 43210-1002**

01540-011000-61801-000P60

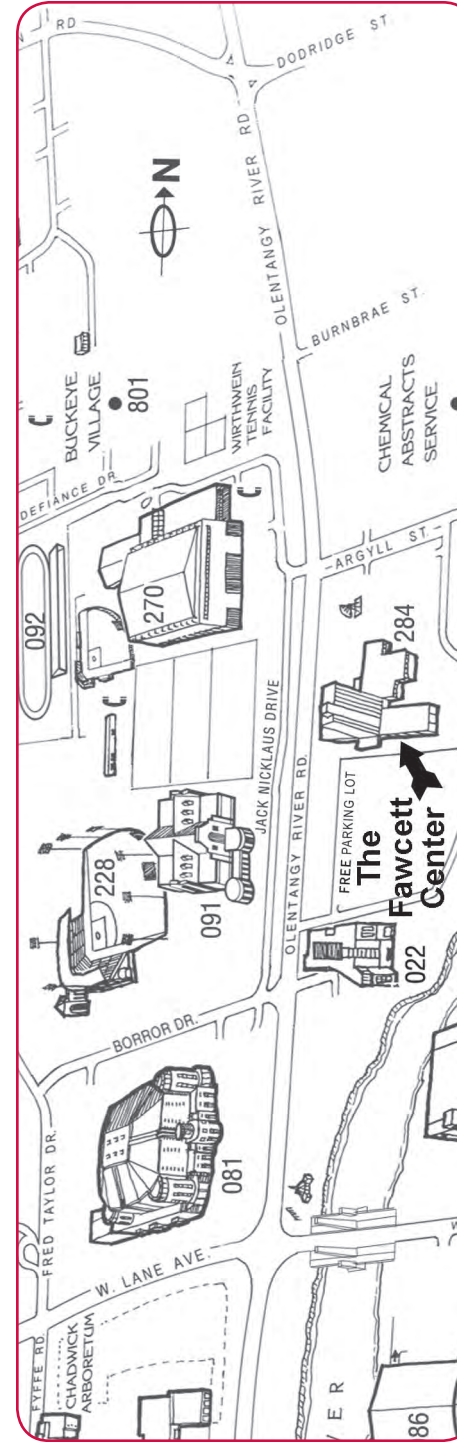


## Winter 2010 Registration



*Learning opportunities  
for citizens over 60 at  
The Ohio State University*

**T · H · E  
OHIO  
STATE  
UNIVERSITY** Office of  
CONTINUING  
EDUCATION



## Important Dates for Winter Quarter 2010

- November 13**  
Early mail-in class registration due by November 13. We will continue to receive registrations through January 15.
- December 15 and 16**  
Program 60 onsite registration for winter quarter at the Fawcett Center **(approximately two weeks before classes begin)**
- January 4**  
First day of classes
- January 15**  
Last day to add classes. Must be received by this date.
- January 18**  
Martin Luther King, Jr. Day — No classes; offices closed
- March 12**  
Last day of regularly scheduled classes



## Winter 2010 Registration

Tuesday, Dec. 15, &  
Wednesday, Dec. 16  
9 a.m.–3 p.m.  
in the Harrison Room  
at the Fawcett Center  
2400 Olentangy River Road,  
Columbus, OH 43210

If you are an Ohio citizen age 60 or older, a unique opportunity awaits you at The Ohio State University. Through Program 60, enroll in classes at Ohio State at no cost. Enjoy the experience of learning just for fun — no credit is earned for participation and no special educational background is required. Acceptance into a class is dependent upon available space and the permission of the class instructor(s).

### COTA Bus and Parking Information

- ◆ COTA bus route #18 has a stop located near the Longaberger Alumni House, which is across the parking lot from the Fawcett Center.
- ◆ Free parking is available in designated areas at the Fawcett Center.
- ◆ Disability parking is available.

## Registration Information

**Classes begin Jan. 4. Onsite registration is approximately two weeks before classes begin.** Registration is from 9 a.m.–3 p.m. on Tuesday, Dec. 15, and Wednesday, Dec. 16, in the Harrison Room of the Fawcett Center (See map on the reverse side.). Peer registrars will be available to help you register for classes.

### **IMPORTANT: New Schedule of Classes Format and Class Numbers**

The *Schedule of Classes* (formerly *Master Schedule*) has a new format with class numbers replacing the formerly used six-digit call numbers. It is extremely important that you include the proper class number with your request. The class number is the four- or five-digit number in parentheses on the search pages and is labeled class or section number. Visit our web site at [www.ced.osu.edu/CEd\\_pro60\\_reg.html](http://www.ced.osu.edu/CEd_pro60_reg.html) for an illustration.

Visit <https://assist-erp.osu.edu/sis/WebHelp/search/class.html> for instructions on the new *Schedule of Classes* format.

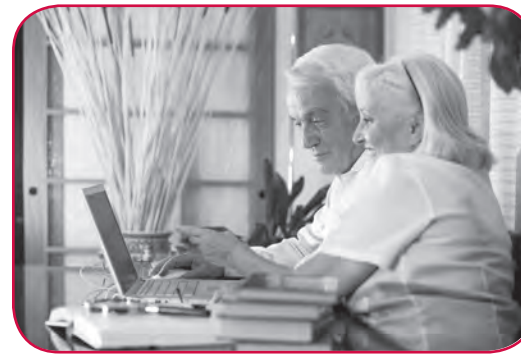
If possible, please bring with you to the Fawcett Center the class numbers (e.g., 3384), department names, course numbers (e.g., Art 205), times, and locations for the courses you wish to schedule.



(614) 292-8860  
[www.ced.osu.edu](http://www.ced.osu.edu)

## Registration By Mail

To register by mail, download and complete a registration form at [www.ced.osu.edu/CEd\\_pro60\\_reg.html](http://www.ced.osu.edu/CEd_pro60_reg.html) and send two copies in a stamped envelope by Nov. 13. We will continue to accept mail-in registrations after Nov. 13, but they will be processed following onsite registration. All registrations must be received by Jan. 15th.



The Program 60  
Association  
welcomes you.

Consider joining the Program 60 Association. The association goes beyond the classroom to offer lectures and other planned social activities throughout the year. Members also find interesting volunteer opportunities at the university. Yearly membership dues are \$3 for Sept. 1, 2009–Aug. 31, 2010.



Paper is certified as recycled with 10-20 percent preconsumer stock.

- Please add me to the Program 60 mailing list.
- Please add me to the Program 60 Association membership for September 2009 to August 2010. Enclosed are my annual dues of \$3.
- Please remove my name from the Program 60 mailing list.
- Please correct my address as you see below.
- Please contact me regarding volunteer opportunities.



Name \_\_\_\_\_

Address \_\_\_\_\_ (Street) \_\_\_\_\_ (City) \_\_\_\_\_ (State) \_\_\_\_\_ (Zip Code)

Telephone ( \_\_\_\_\_ ) \_\_\_\_\_ E-mail \_\_\_\_\_

Return this portion to: Program 60, The Ohio State University Office of Continuing Education,  
152 Mount Hall, 1050 Carmack Road, Columbus, OH 43210-1002